

TRANSMISSION ASSEMBLY <4WD>

22100350031

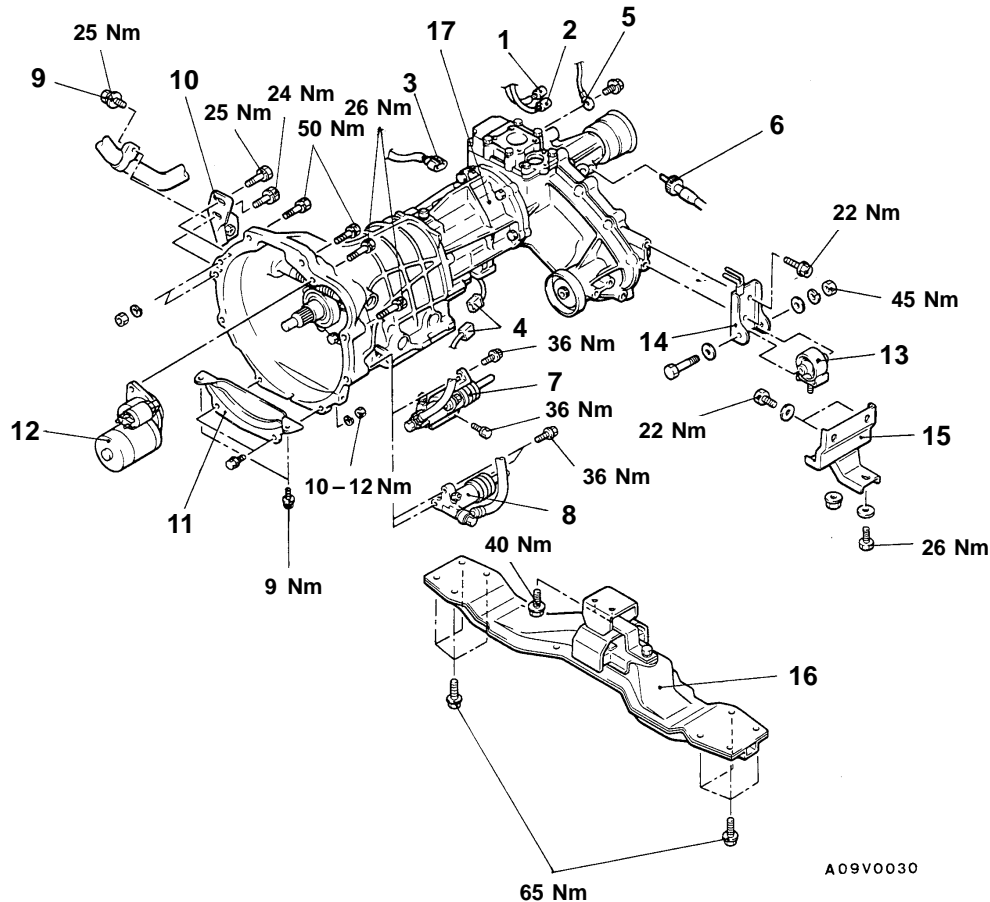
REMOVAL AND INSTALLATION

Pre-removal Operation

- (1) Transmission and Transfer Control Lever Removal (Refer to P. 22-8.)
- (2) Transfer Case Protector Removal
- (3) Transmission and Transfer Oil Draining (Refer to P. 22-4.)
- (4) Front and Rear Propeller Shaft Removal (Refer to GROUP 25.)

Post-installation Operation

- (1) Front and Rear Propeller Shaft Installation (Refer to GROUP 25.)
- (2) Transmission and Transfer Oil Filling (Refer to P. 22-4.)
- (3) Transfer Case Protector Installation
- (4) Transmission and Transfer Control Lever Installation (Refer to P.22-8)
- (5) Transmission and Transfer Control Lever Operation Check
- (6) Speedometer Operation Check

**Removal steps**

- | | |
|--|--|
| <ol style="list-style-type: none"> 1. HIGH/LOW detection switch connector 2. 4WD detection switch connector 3. Back-up lamp switch connector <4D56> 4. Back-up lamp switch connector <4G64> 5. Earth cable 6. Speedometer cable connection 7. Clutch release cylinder, bracket assembly <4G64> 8. Clutch release cylinder <4D56> | <ol style="list-style-type: none"> 9. Exhaust pipe clamp mounting bolt <4G64> 10. Transmission hanger bracket <4G64> 11. Bell housing cover 12. Starter motor <ul style="list-style-type: none"> ● Support the transmission with a transmission jack 13. Transfer roll stopper 14. Transfer mount bracket 15. Transfer support bracket 16. No. 2 cross member 17. Transmission assembly |
|--|--|



A09V0030